

Chamber of Commerce Building



OFFERING SUMMARY

Sale Price:	N/A
Lease Rate:	N/A
Building Size:	5,655 SF
Available SF:	
Lot Size:	0.13 Acres
Number Of Units:	1
Year Built:	1905
Renovated:	2000
Zoning:	D
Market:	CBD
Submarket:	Downtown

PROPERTY OVERVIEW

Historic office building in the heart of Downtown. Enjoy entire floor with open and private office settings. Currently set up for 6 live/work spaces with individual kitchens and bathrooms. Private ground floor entry off Lasoya Street with stairs and elevator access to second floor offices. Great windows looking at San Antonio skyline.

PROPERTY HIGHLIGHTS



Additional Photos



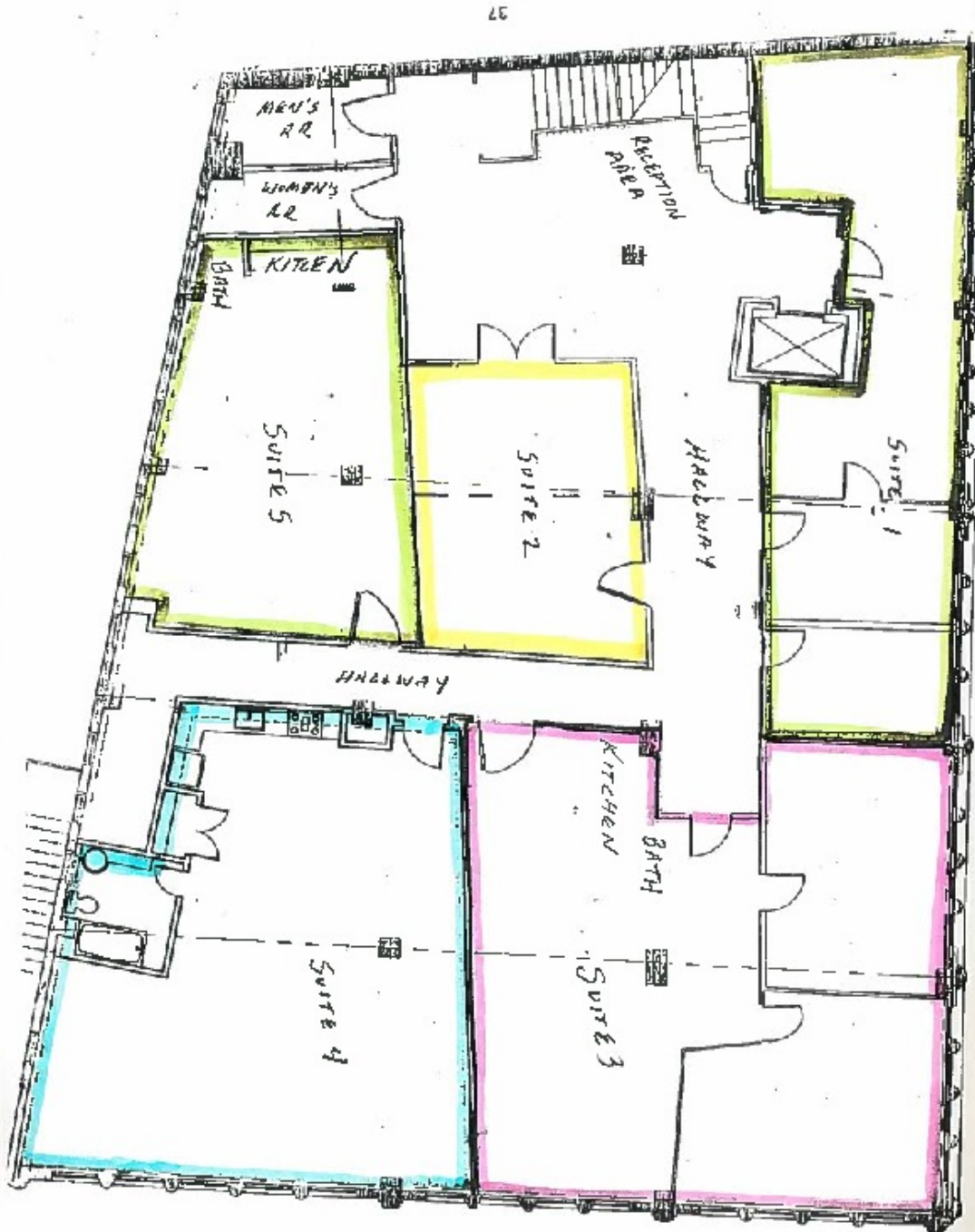


Additional Photos



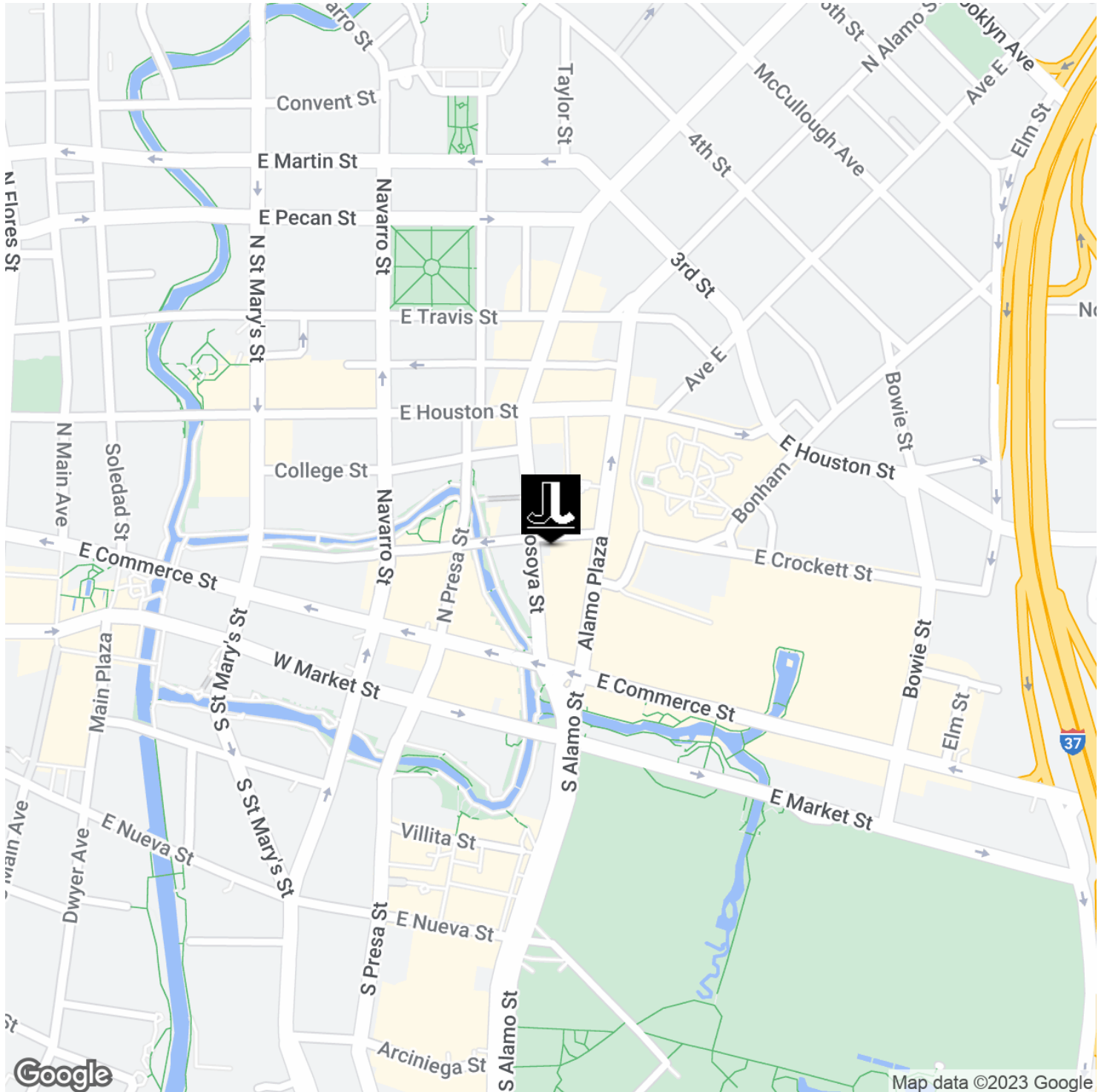


Floor Plans





Location Maps





Broker Contact



JEREMY JESSOP

jj@jjrealco.com

Direct: 210.386.3970

PROFESSIONAL BACKGROUND

Jeremy Jessop specializes in commercial real estate brokerage, specifically in area near Pearl Brewery, River North, Downtown, Near East Side, Southtown, and Alamo Heights areas of San Antonio, Texas. Jessop started his real estate career in 2004 as a sophomore at Rhodes College. Moving back home to San Antonio he started investing in residential, small multi-family and commercial buildings. For the past 9 years Jessop has focused on adaptive reuse projects with leasing, investment sales and land assemblage. Jessop lives in King William with his wife Sara and their two adopted dogs.

JJ REAL CO
1114 S St Mary's Suite 100
San Antonio, TX 78210
210.386.3970